

Figure 1. Percentage of infected (light shaded) vs. noninfected (dark shaded) in August.

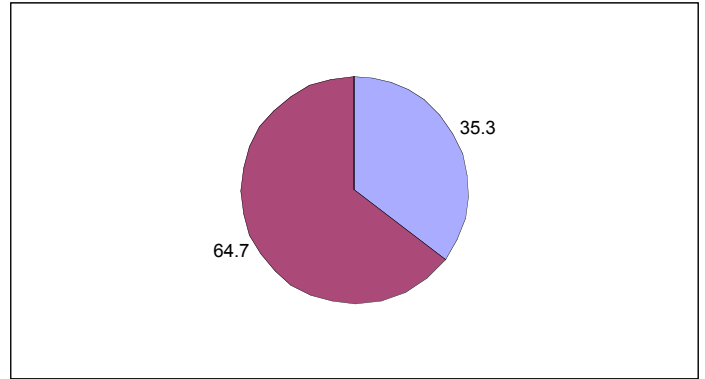


Figure 2. Percentage of infected (light shaded) vs. noninfected (dark shaded) in October.

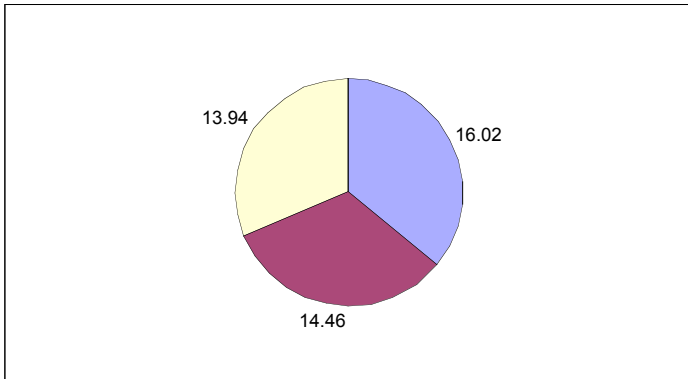


Figure 3. Percentage of infection in left eye (light shaded), right eye (dark shaded), and both eyes (white area) in August.

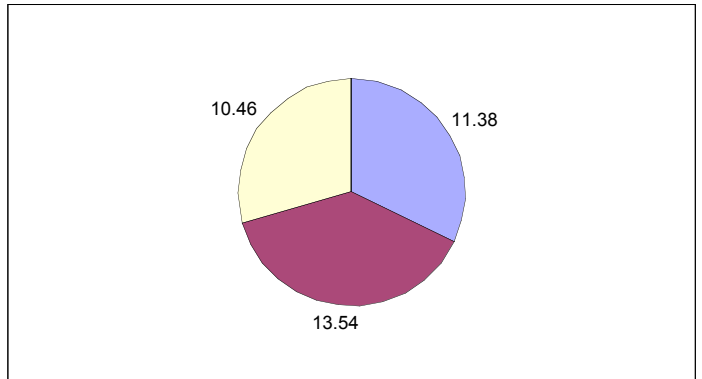


Figure 4. Percentage of infection in left eye (light shaded), right eye (dark shaded), and both eyes (white area) in October.

Table 1. Average score per eye.

Month	Right eye	Left eye
August	1.88	1.86
October	1.31	1.30