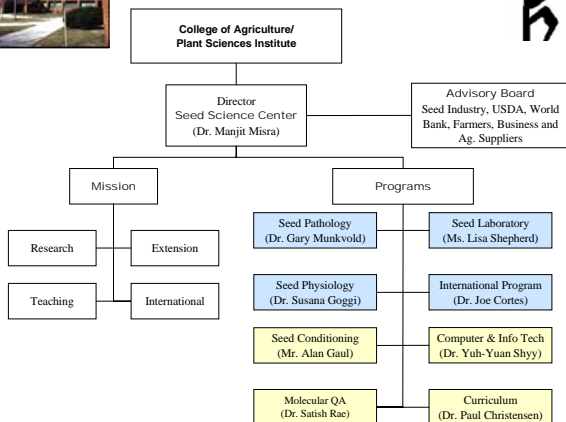




Governance of the ISU Seed Science Center



Seed Science Center, Iowa State University

The Seed Science Center at Iowa State University is recognized nationally and internationally as a center of excellence in seed research, education, and seed systems development. We are passionate about seeds and have had programs in 54 countries in the last ten years including current programs in a number of countries in Africa. Following are some highlights of the Seed Science Center:

- The Center's Seed Laboratory is the largest public seed laboratory in the world, testing over 40,000 seed samples from 300 species. The Center also conducts seed health tests for over 250 seed pathogens.
- The Seed Science Center has been designated by the U.S. Department of Agriculture to administer the National Seed Health System.
- The Center conducted programs on seed policies and regulations in 54 countries during the last 10 years. A recent collaborative program in Africa led to the endorsement of three major agreements on seed policies and regulations among the Permanent Secretaries of the Southern African Development Community (SADC).
- The Food and Agricultural Organization (FAO) signed an agreement with the Seed Science Center to conduct worldwide programs on seed policies and regulations.
- The Center facilitates a seed curriculum for undergraduates. It also facilitates interdisciplinary research for graduate students and just completed a fundraising campaign that raised over one million dollars for graduate research in seed science and technology.
- The Center developed a Seed Technology and Business graduate curriculum to be delivered worldwide via distance education technology beginning Fall 2007.
- The Seed Science Center publishes a newsletter that is distributed to over 1,500 clients in 40 countries.



Seed Science Center

*Quality Seeds
to Feed the World*



VISION



The Seed Science Center at Iowa State University will be the global center of excellence in seed science, seed technology and seed systems.

For more information:

Phone: (515)-294-6821/Fax: (515)-294-2014
E-Mail: mkmisra@iastate.edu

Homepage: <http://www.seeds.iastate.edu>



Iowa State University
College of Agriculture
Plant Sciences Institute



ISU Seed Testing Laboratory

For over 100 years, Iowa State University has provided accurate, professional seed testing services to the seed industry. The Seed Lab annually performs tests on 40,000 seed samples, making it one of the world's largest seed testing programs. The Seed Lab analyzes more than 300 plant species, performing a variety of tests that include germination



tests (to AOSA and ISTA standards); vigor, purity and noxious weed exams; trait tests; and over 200 different seed health tests. The staff is a group

of dedicated professionals with many years of experience. The lab's modern facilities include the latest scientific research and computer technologies.

Seed Science and Technology Research

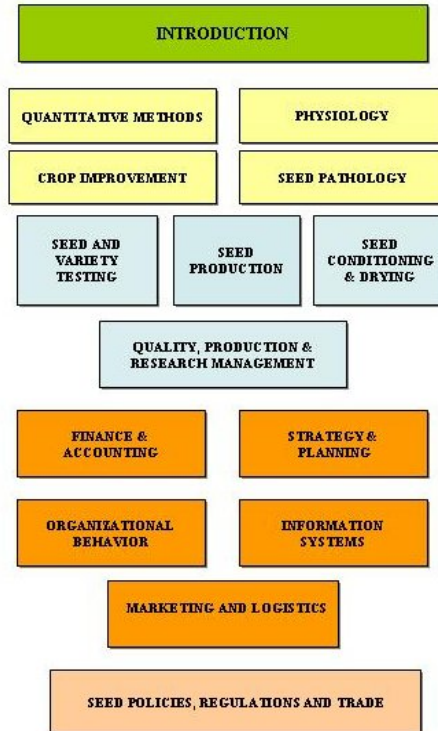
Researchers developed methods to predict the rate of pollen production from simple measurements of tassel development, and determined how quickly corn pollen loses this capacity as it travels in the air.



Master's in Seed Technology and Business

The interdisciplinary degree combines scientific and technical subjects relating to seed and genetic improvement with business courses similar to those in the first year of a master's of business administration program.

The objective of the new degree is to develop decision-making skills that will prepare students for roles in the seed industry and government organizations involved in seed regulation.



The program will be delivered over the Internet to allow the participation of students from around the United States and the world. It will be scheduled over more than two and a half years so that working professionals can participate.

International Programs

The Seed Science Center in collaboration with ICRISAT, USAID and International Research Centers developing sustainable seed systems to support commercialization of small-scale agriculture in sub-Saharan Africa.



GMO Testing / PCR Methodologies

The future implications of seed technology have guaranteed great opportunities here at the Seed Science Center and Seed Testing Laboratory. Personnel look forward to the development of real-time PCR technologies in the areas of event-specific detection in GM seed and the finalization of a new Isoelectric Focusing (IEF)



laboratory and services. With each step in technological innovation, there are innumerable aftershocks as the seed industry tries to keep up with responsible detection and regulation during this exciting time. The Seed Testing Laboratory's DNA services are continually expanding, offering services to truly benefit the industry now and in the coming years.

Undergraduate Scholarship Program

The future of the seed industry will be shaped by emerging leaders who can manage change and influence positive growth. The Seed Science Center and the Iowa Seed Association provided scholarships to attract the best minds to the industry and prepare them to be such future leaders.

